

YEAR 2019

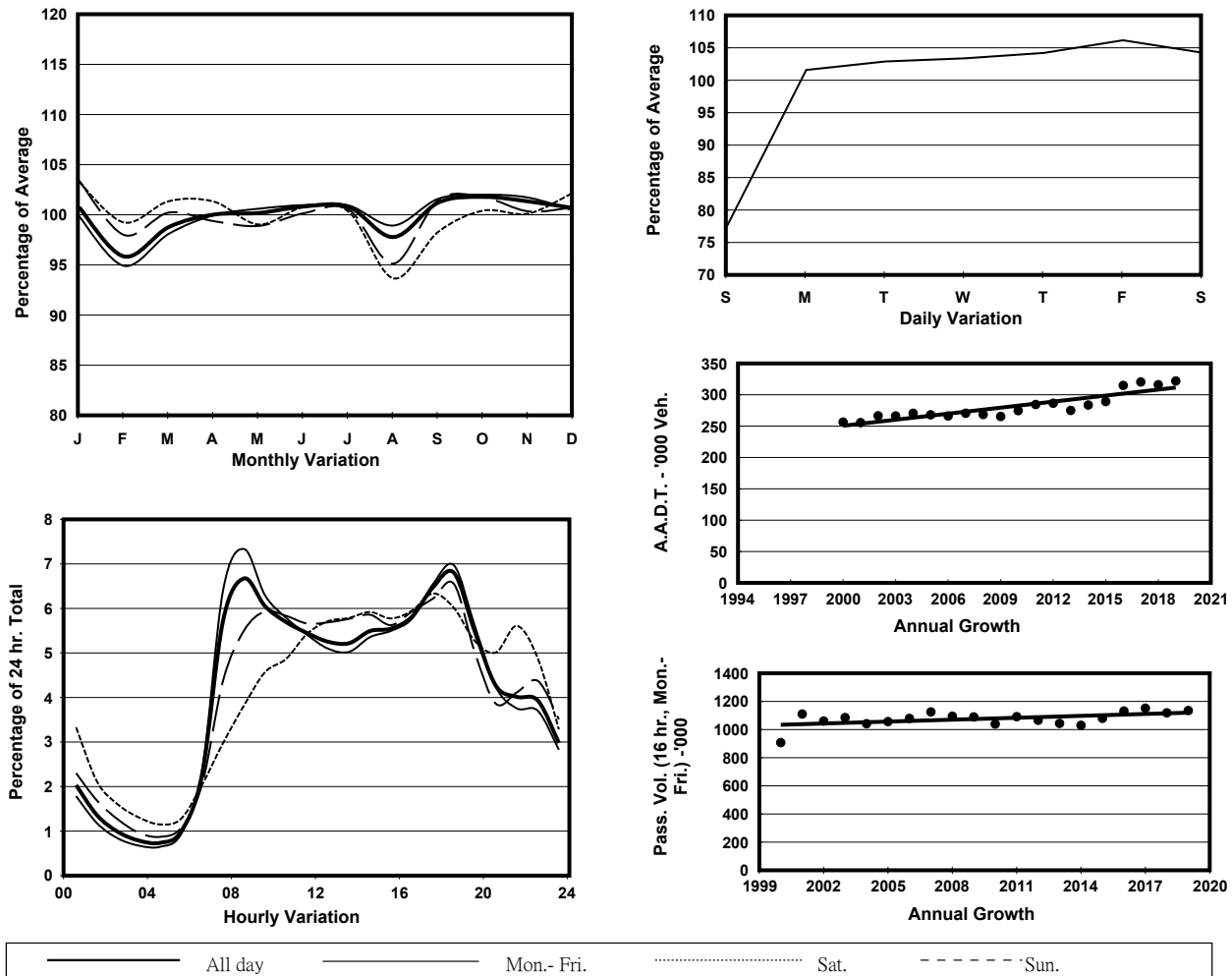
Location

Screenline S-S(East end of Tuen Mun & Yuen Long)

Stations on Cordon/Screenline

5012, 5016, 5029, 6207, 6208 and 6209

## 1. TRAFFIC FLOW VARIATION AND GROWTH



## 2. TRAFFIC CHARACTERISTICS (BY DIRECTION)

Parameter	All - Day	Mon. - Fri.	Sat.	Sun.
<b>EAST BOUND</b>				
A.A.D.T.	160700	168650	169570	125810
R 12 / 24 - %	73.3	74.7	72	65.9
R 16 / 24 - %	88.5	89.2	87.3	85
AM Peak Hour	0800-0900	0800-0900	0900-1000	0900-1000
One-way flow at AM peak hour	12730	14800	11420	6480
T - % (AM)	-	19.5	-	-
PM Peak Hour	1800-1900	1800-1900	1800-1900	1700-1800
One-way flow at PM peak hour	9730	10220	10540	7890
T - % (PM)	-	17.2	-	-
Prop.of commercial vehicles - 16 hr.	-	22.5	-	-
<b>WEST BOUND</b>				
A.A.D.T.	161330	169250	169710	127170
R 12 / 24 - %	67.1	68.3	65.9	60.4
R 16 / 24 - %	87.3	88.3	85.3	82.8
AM Peak Hour	0800-0900	0800-0900	0900-1000	0900-1000
One-way flow at AM peak hour	8760	9990	8710	5070
T - % (AM)	-	24.4	-	-
PM Peak Hour	1800-1900	1800-1900	1800-1900	1700-1800
One-way flow at PM peak hour	12170	13320	11690	8140
T - % (PM)	-	15.5	-	-
Prop.of commercial vehicles - 16 hr.	-	23	-	-

## 3. OTHER INFORMATION AND COMMENT

4. Vehicle classification and occupancy - Monday to Friday

Time		Class of vehicle									
		Motor Cycle	Private Car	Taxi	Private LB	PLB	Goods veh.		Non Fr. Bus	Fr. Bus	
							Light	M & H		SD	DD
0700-0800	Pro	3.1	45.9	8.1	0.8	2.8	16.8	14.2	4.0	0.1	4.2
	Ocp	1.0	1.3	2.1	6.7	12.1	1.4	1.1	23.9	23.5	66.6
0800-0900 Peak Hour	Pro	2.1	50.4	6.7	0.9	1.9	16.5	14.8	3.0	0.1	3.7
	Ocp	1.0	1.3	1.9	5.8	13.8	1.3	1.2	27.4	29.2	64.3
0900-1000	Pro	1.5	41.4	7.2	0.4	1.7	21.6	19.9	2.3	0.1	4.0
	Ocp	1.1	1.3	2.0	2.8	12.3	1.4	1.2	14.5	17.5	38.5
1000-1100	Pro	1.2	39.3	6.7	0.5	1.9	22.6	22.3	1.9	0.1	3.5
	Ocp	1.1	1.3	2.0	2.3	10.6	1.3	1.2	17.7	27.0	32.1
1100-1200	Pro	1.3	38.6	6.6	0.4	2.1	23.0	22.9	1.8	0.1	3.3
	Ocp	1.0	1.3	2.0	1.7	10.3	1.4	1.1	16.0	12.2	34.6
1200-1300	Pro	1.0	41.4	6.5	0.8	2.4	20.8	22.1	1.6	0.1	3.5
	Ocp	1.0	1.3	1.9	6.4	10.9	1.4	1.1	15.5	21.0	34.0
1300-1400	Pro	1.2	38.9	6.3	0.6	1.8	23.3	22.5	1.9	0.1	3.4
	Ocp	1.1	1.3	2.1	2.8	11.6	1.3	1.1	14.2	21.5	37.6
1400-1500	Pro	0.9	40.3	5.2	0.4	1.8	23.4	23.5	1.4	0.1	3.0
	Ocp	1.1	1.4	2.0	3.0	11.2	1.4	1.1	20.2	14.0	36.1
1500-1600	Pro	1.1	39.3	6.0	0.8	1.9	23.0	23.1	1.6	0.1	3.2
	Ocp	1.1	1.3	2.0	5.4	11.7	1.3	1.1	13.8	8.6	34.4
1600-1700	Pro	1.4	42.5	6.5	1.2	2.0	22.0	18.2	2.5	0.1	3.7
	Ocp	1.0	1.4	1.9	4.6	11.8	1.3	1.1	16.5	20.6	38.5
1700-1800	Pro	2.9	46.3	6.5	0.8	2.0	21.1	14.2	2.4	0.1	3.7
	Ocp	1.1	1.4	2.1	2.8	14.9	1.4	1.1	18.9	25.0	50.4
1800-1900	Pro	2.4	60.3	6.3	0.3	2.1	12.4	9.4	3.1	0.1	3.6
	Ocp	1.1	1.4	1.9	2.8	15.5	1.3	1.1	23.6	23.0	71.9
1900-2000	Pro	1.9	63.2	7.3	0.1	2.4	9.3	8.0	3.5	0.1	4.3
	Ocp	1.1	1.3	2.0	4.1	12.5	1.2	1.1	23.3	17.2	55.5
2000-2100	Pro	1.7	57.5	10.8	0.1	3.0	10.0	9.1	3.0	0.1	4.8
	Ocp	1.1	1.3	1.9	1.3	10.8	1.3	1.1	20.1	14.7	40.0
2100-2200	Pro	1.6	59.1	13.3	0.1	2.5	8.7	7.4	2.1	0.1	5.1
	Ocp	1.3	1.4	2.0	2.1	10.0	1.2	1.0	14.3	12.0	41.7
2200-2300	Pro	2.0	59.9	15.0	0.2	2.1	8.3	6.0	1.6	0.1	4.8
	Ocp	1.1	1.3	1.9	3.3	10.2	1.4	1.1	19.6	9.0	44.3
16 hours	Pro	1.8	47.4	7.5	0.5	2.1	18.1	16.4	2.4	0.1	3.8
	Ocp	1.1	1.3	2.0	4.3	12.1	1.3	1.1	20.0	17.2	46.7

**Legend: Pro.** Proportion of vehicles in % (Sum may not add up to 100% due to figure rounding)\*

**Ocp.** Average occupancy of vehicles including both driver and passengers\*

**M&H** Medium and Heavy

\* All traffic data are collected from combined bounds